



Port of tomorrow

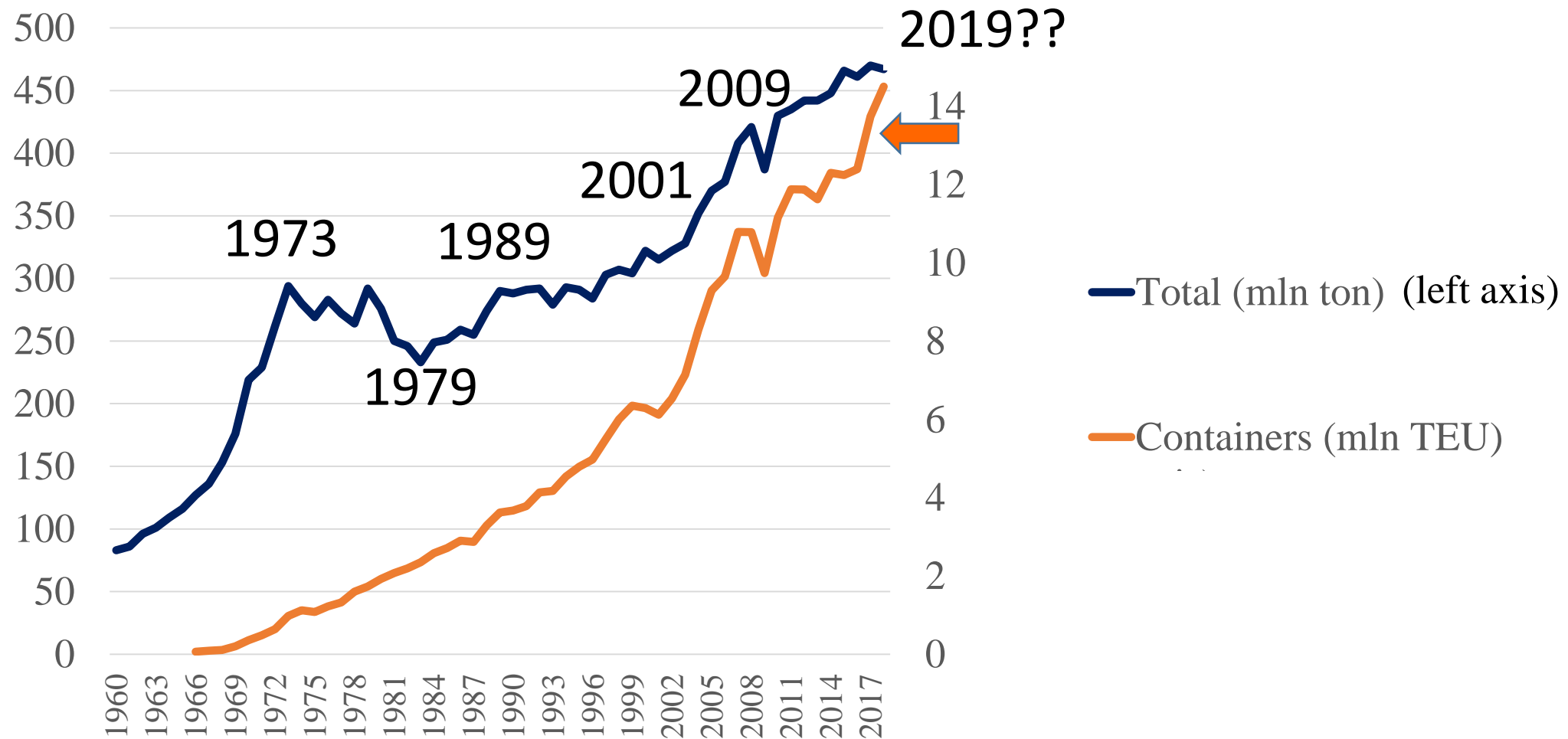
Seaports are mirroring developments in the global economy

Dr. Bart Kuipers

Erasmus Center for Urban, Port and Transport economics

Rotterdam: global port/Gateway to Europe

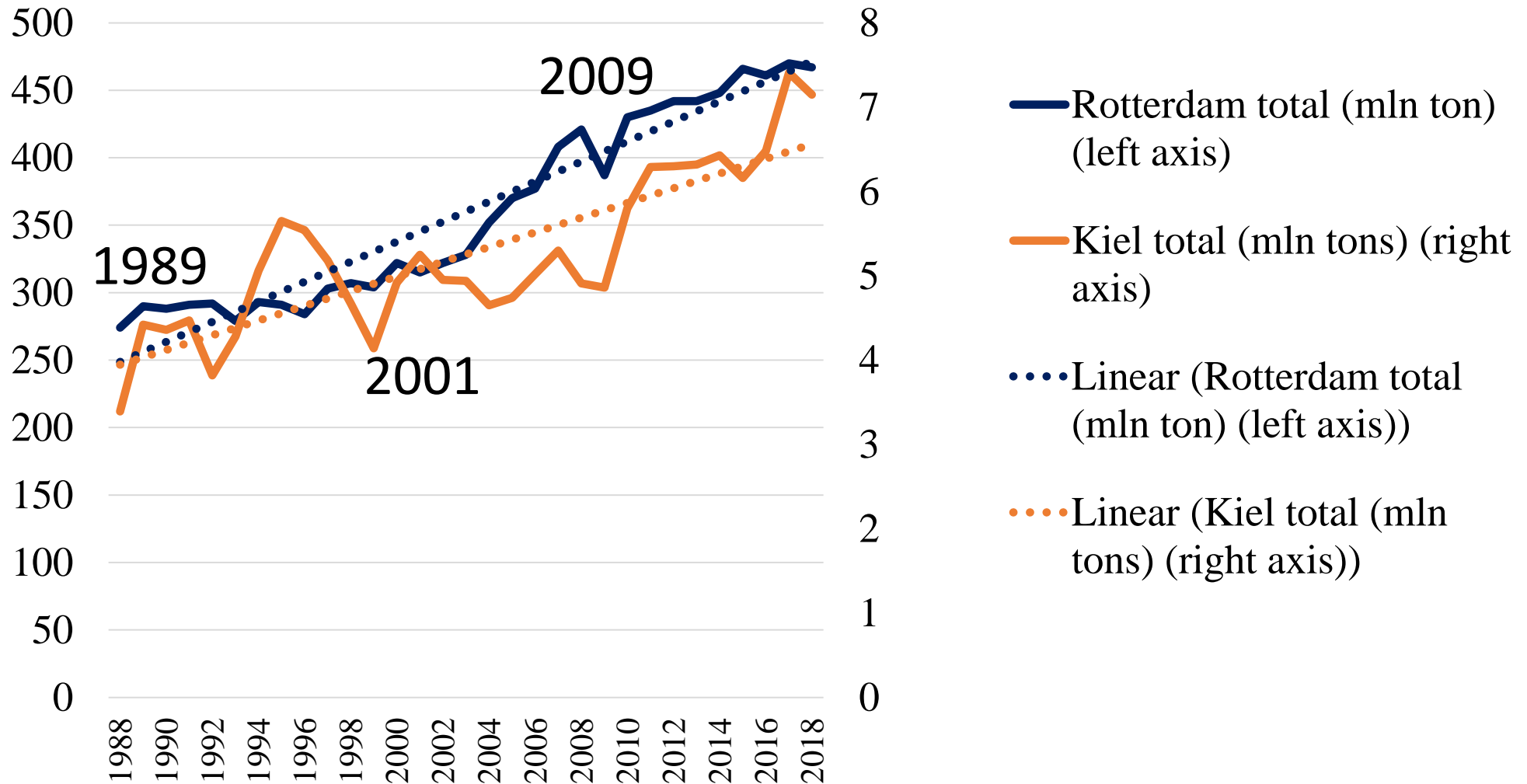
Throughput port of Rotterdam strongly related to global trade and German industrial production (1960-2018)



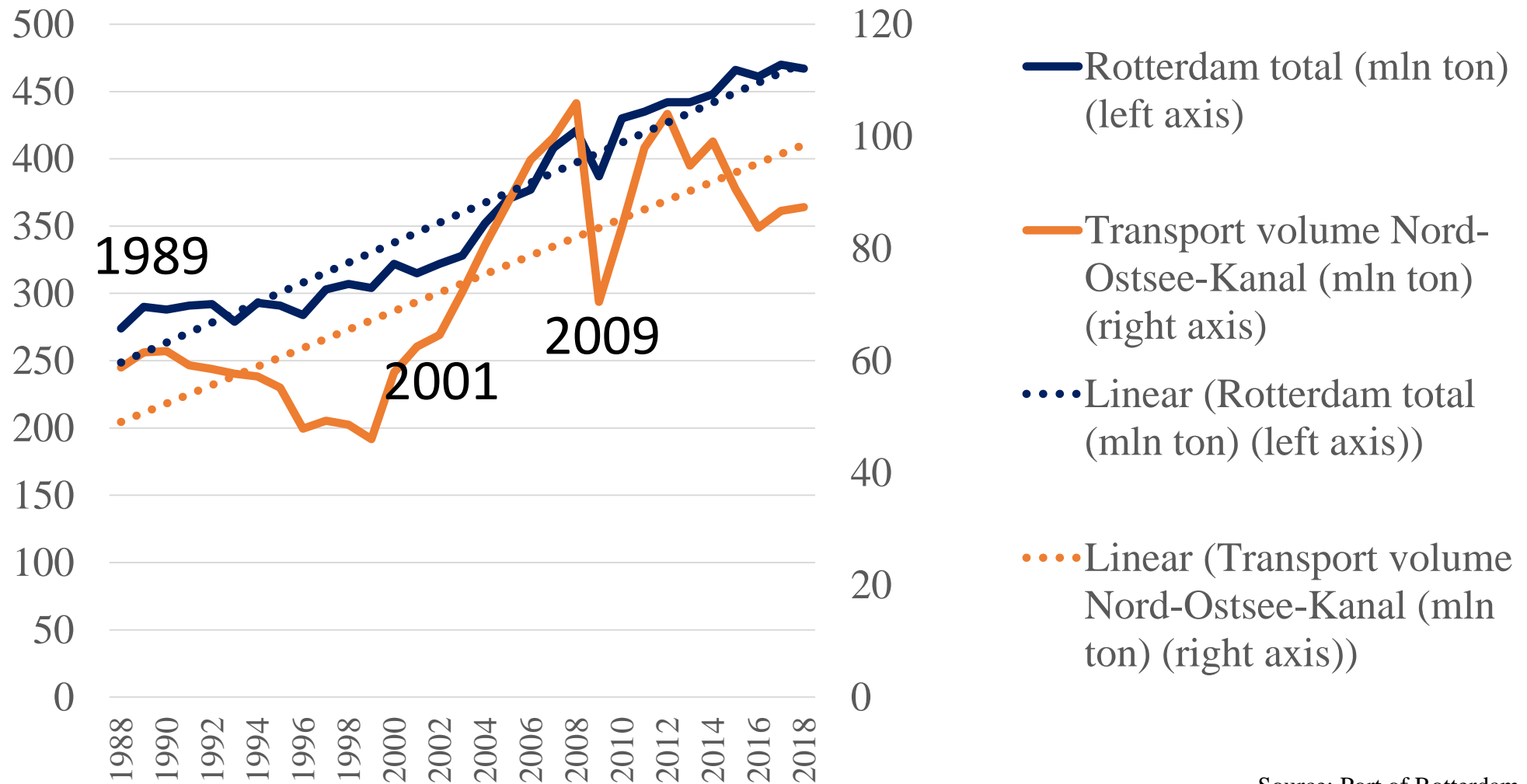


MSC GUL-SUN
PANAMA
IMO 9839430

Performance ports of Kiel and Rotterdam, 1988-2018, million ton.



Performance Nord-Ostsee-Kanal and port of Rotterdam, 1988-2018, million ton.



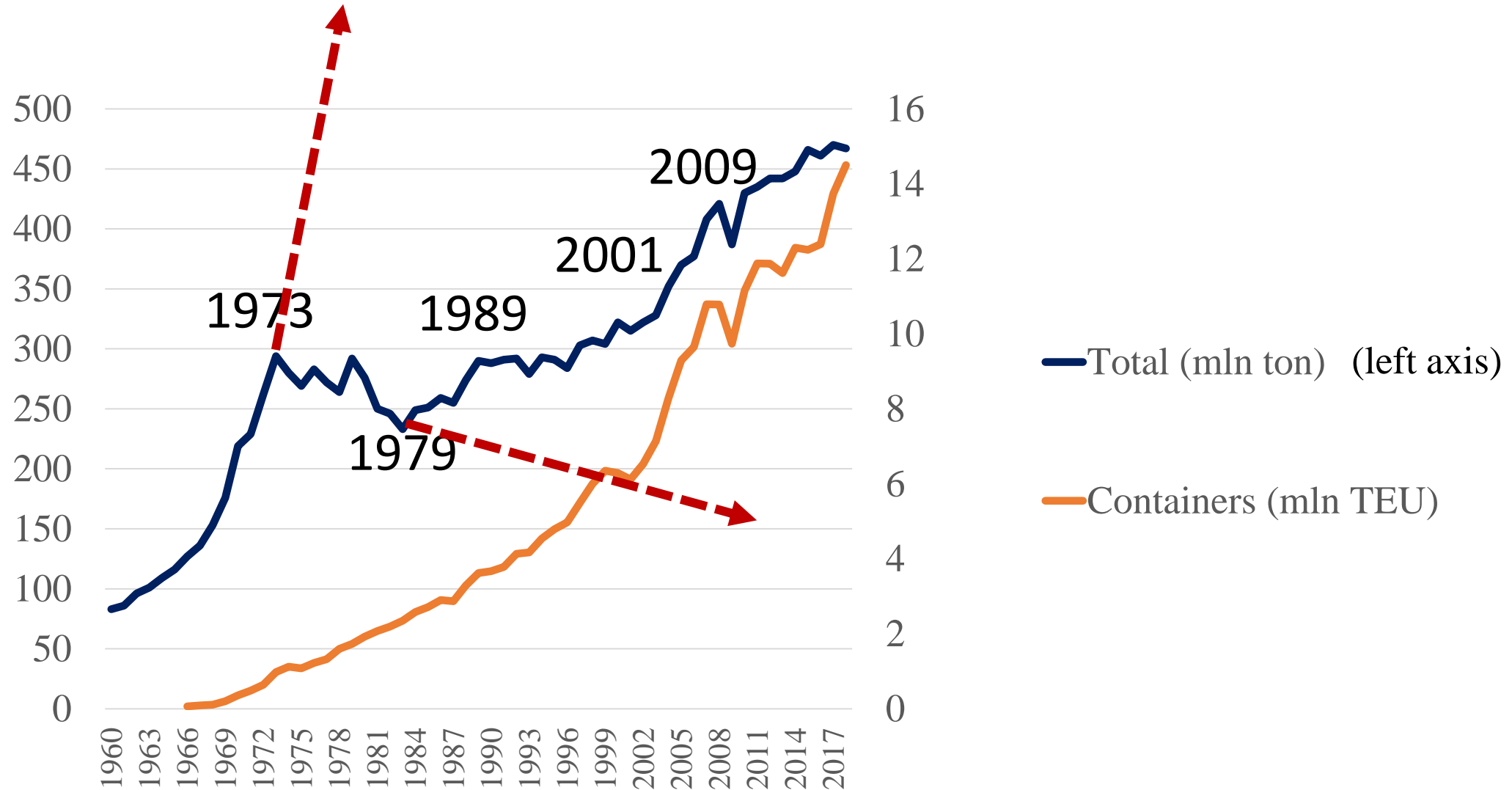
Port of Gdansk Outlines Expansion Plans

By Matteo Natalucci • 7 November 2019, 15:11 GMT • [Automation and Optimization](#), [Port Profiles](#), [Ports and Terminals](#)



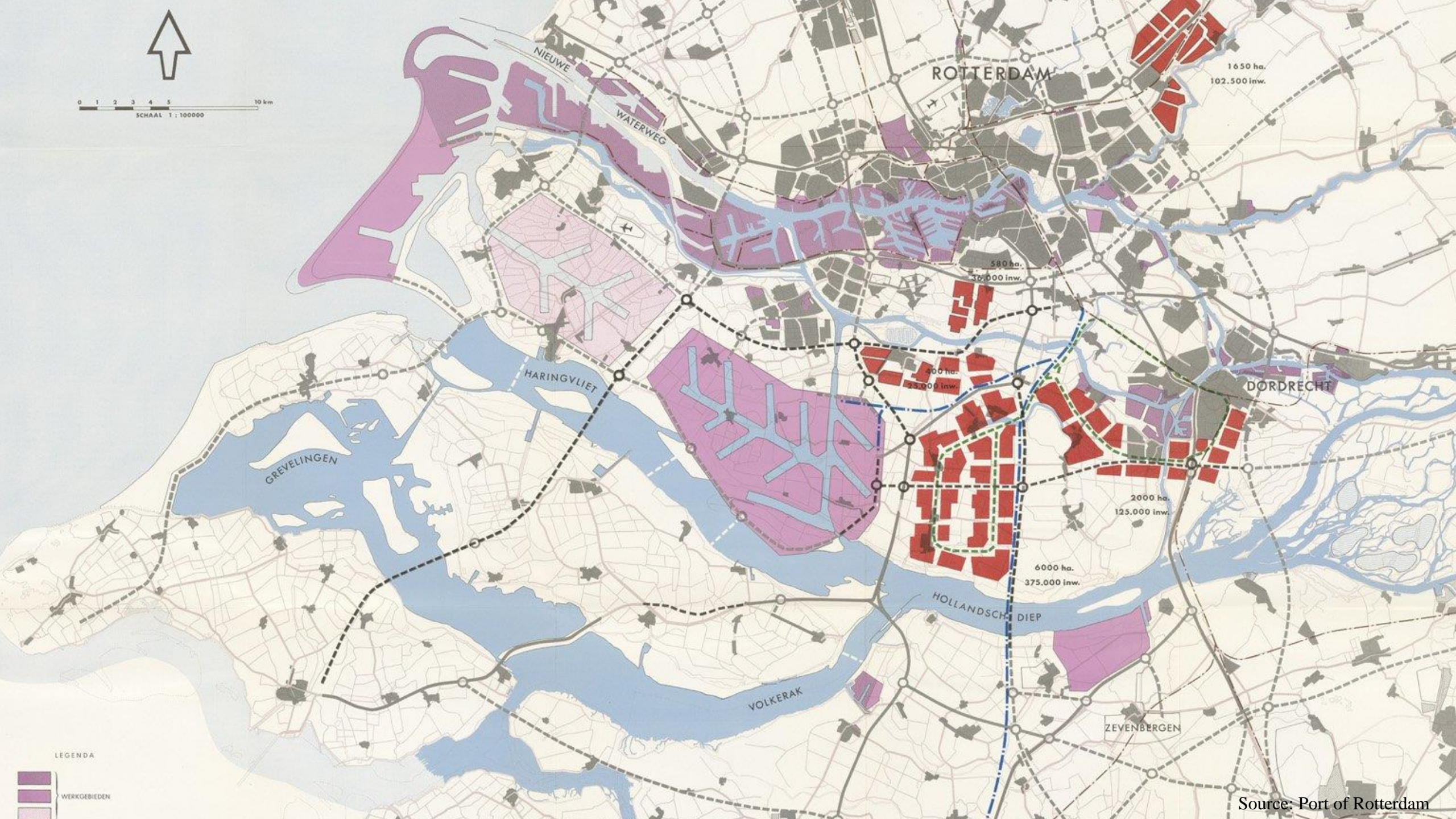
The Port of Gdansk has unveiled its plans to build a USD \$3.1 billions port in a bid to double its cargo volumes from 50 million in 2019 to 100 million tonnes a year.

Forecasting is difficult: in the early 1970's Rotterdam prepared for continued growth....





0 1 2 3 4 5 10 km
SCHAAL 1 : 100000



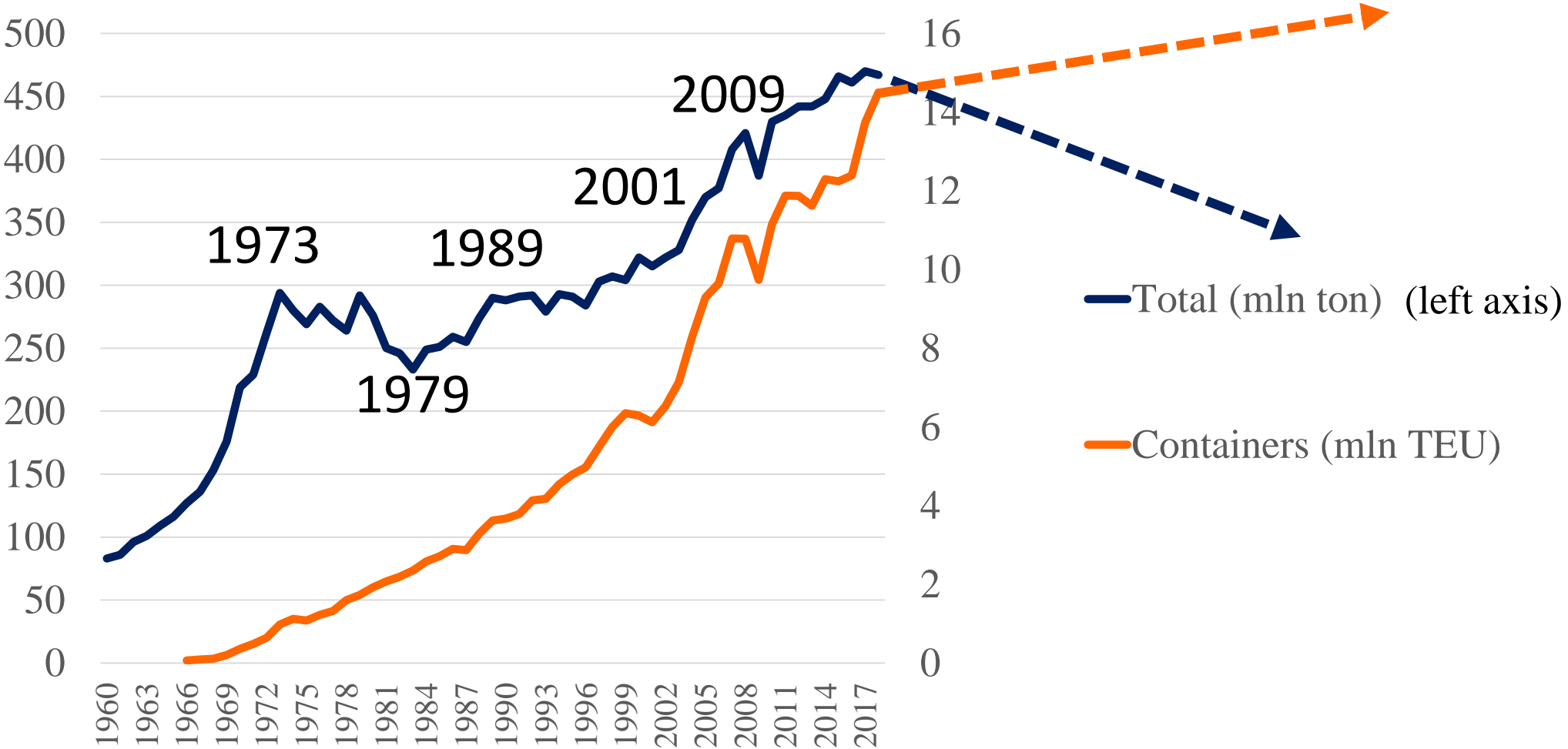
LEGENDA



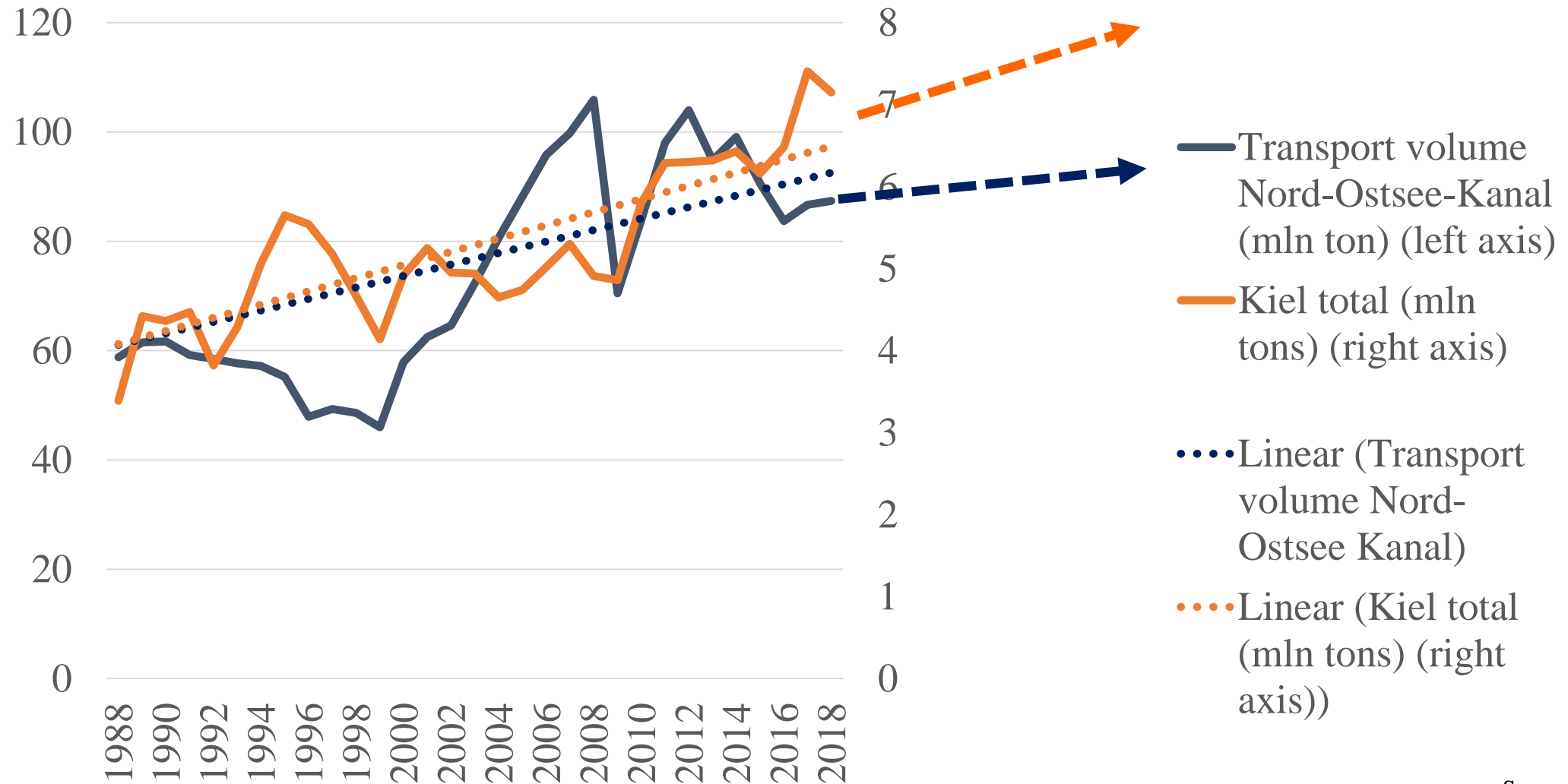
WERKGEBIEDEN

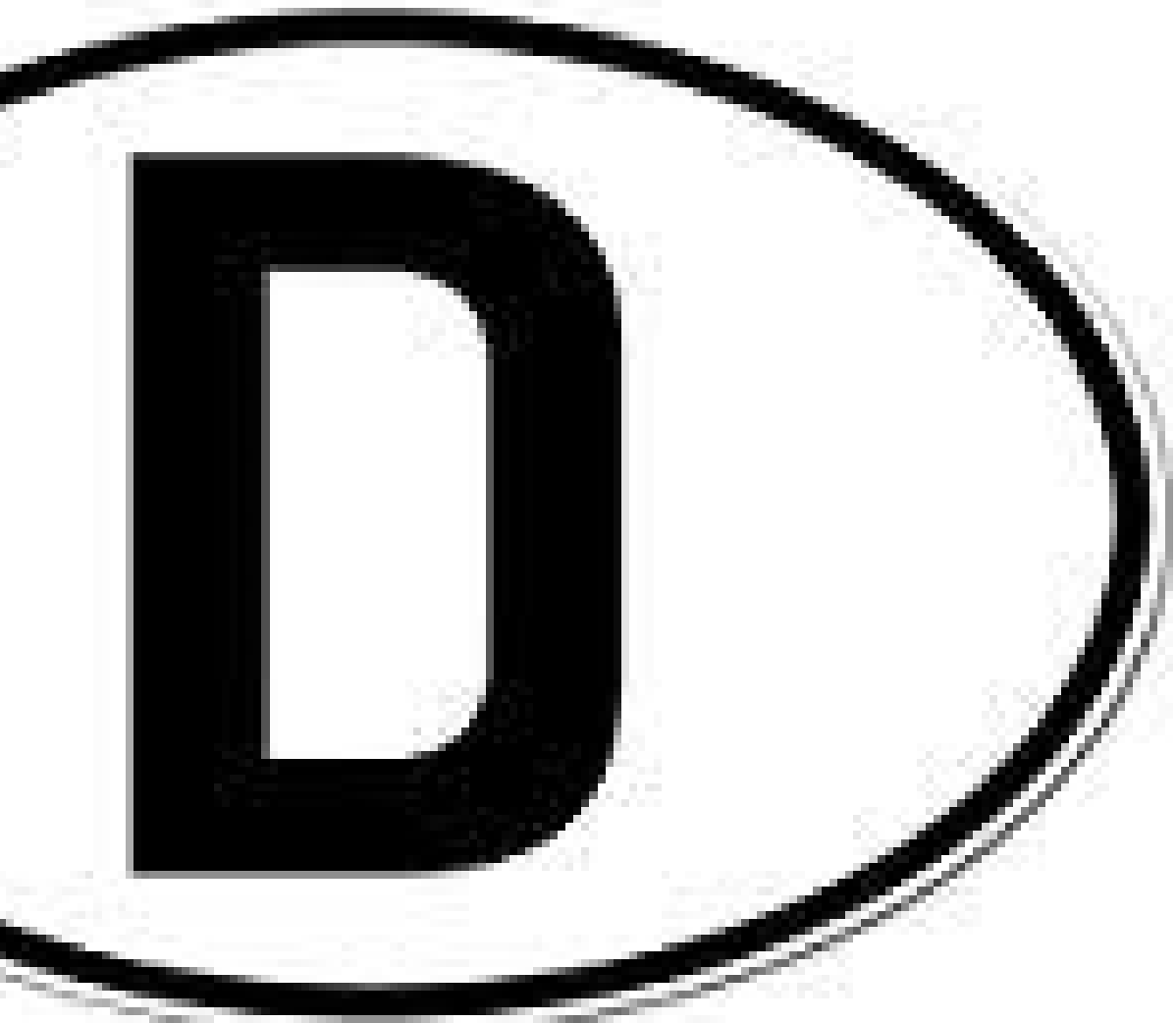
Source: Port of Rotterdam

Future growth in the port of Rotterdam will be negative: only slow growth for containers....



“Personal Vision” for 2042: port of Kiel is growing according to trend, growth Nord-Ostsee-Kanal is slightly below trend





decarbonisation

deglobalisation

digitalisation

deskilling/new skills

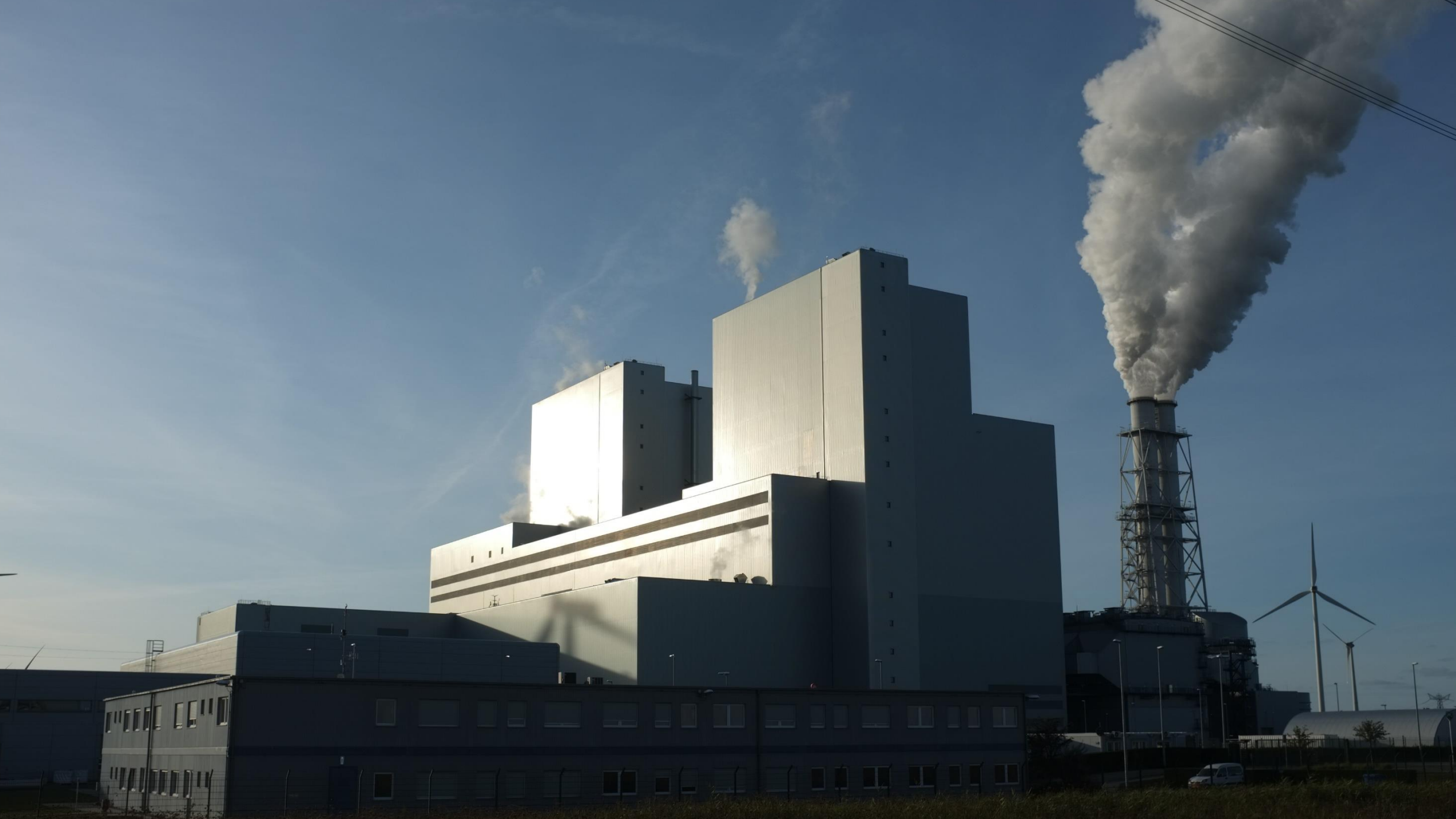
disruption/geopolitics

diversification of ports

decreasing externalities

Decarbonisation

- Dutch seaports produce nearly **half** of Dutch CO₂-production
- The port of Rotterdam is responsible for nearly **a quarter of Dutch** CO₂-production
- Decarbonisation is the most dominant transition shaping ports towards 2042



PARIS

2015

A silhouette of a person with their arms raised in a celebratory gesture, standing on a dark horizon line. The person is positioned between the large numbers '0' and '1' of the year '2015'. The background is a clear blue sky with a bright sun setting or rising behind the horizon, creating a lens flare effect.

DOUBLE ISSUE

DEC. 23 / DEC. 30, 2019

PERSON *of the* YEAR

TIME

**GRETA
THUNBERG**

THE POWER
OF YOUTH



time.com

Investment of €1 trillion in EU climate policies



2016

2020

2025

2030

2035

2040

2045

2050

Percentage of energy mix non-fossil

ENERGY TRANSITION TIMELINE

Green slope: share of non-fossil energy sources in the energy mix

- ▲ Energy peaks
- Non-fossil share
- ▮ Energy transitions
- ▮ Energy milestones

2014 Coal peaked

19% of the energy mix is non-fossil

2023 Oil peaks

2026 Transport energy demand peaks

2034 Natural gas peaks

2033 Nuclear peaks

2039 Manufacturing energy demand peaks

2042

2050 50% energy mix is non-fossil

100%

90%

80%

70%

60%

50%

40%

30%

20%

10%

0%

2024 Light EVs reach cost parity with internal combustion engine (ICE) vehicles

2023 PV installations 1TW

2026 Gas overtakes oil

2028 95% of world population has electricity access

2031 Wind overtakes hydro

2034 Non-fossil capex overtakes fossil capex

2035 World grid capacity doubles from 2016

2040 PV installations 10TW

2044 Non-fossil expenditures overtake fossil expenditures

2042 Half of the world's fleet of road vehicles - light and heavy - is electric

2044 Solar PV overtakes biomass in primary energy

2049 Solar PV overtakes oil in primary energy

2047 Heavy electric vehicles start to outnumber ICE heavy vehicles on the road



2023 Seaborne container trade exceeds crude oil trade

2035 Maritime energy demand peaks

2038 Seaborne gas trade exceeds coal trade

2042 Half of maritime energy use is non-oil



Seaport Kiel loses throughput due to decline in coal

The cargo throughput in the seaport of Kiel, Germany, fell by almost 2% last year. This was mainly because fewer coal were handled. For example, the old coal-fired power station on the Förde-Ufer was decommissioned.

[FOLKERT NICOLAI](#) 17 januari 2020 11:45

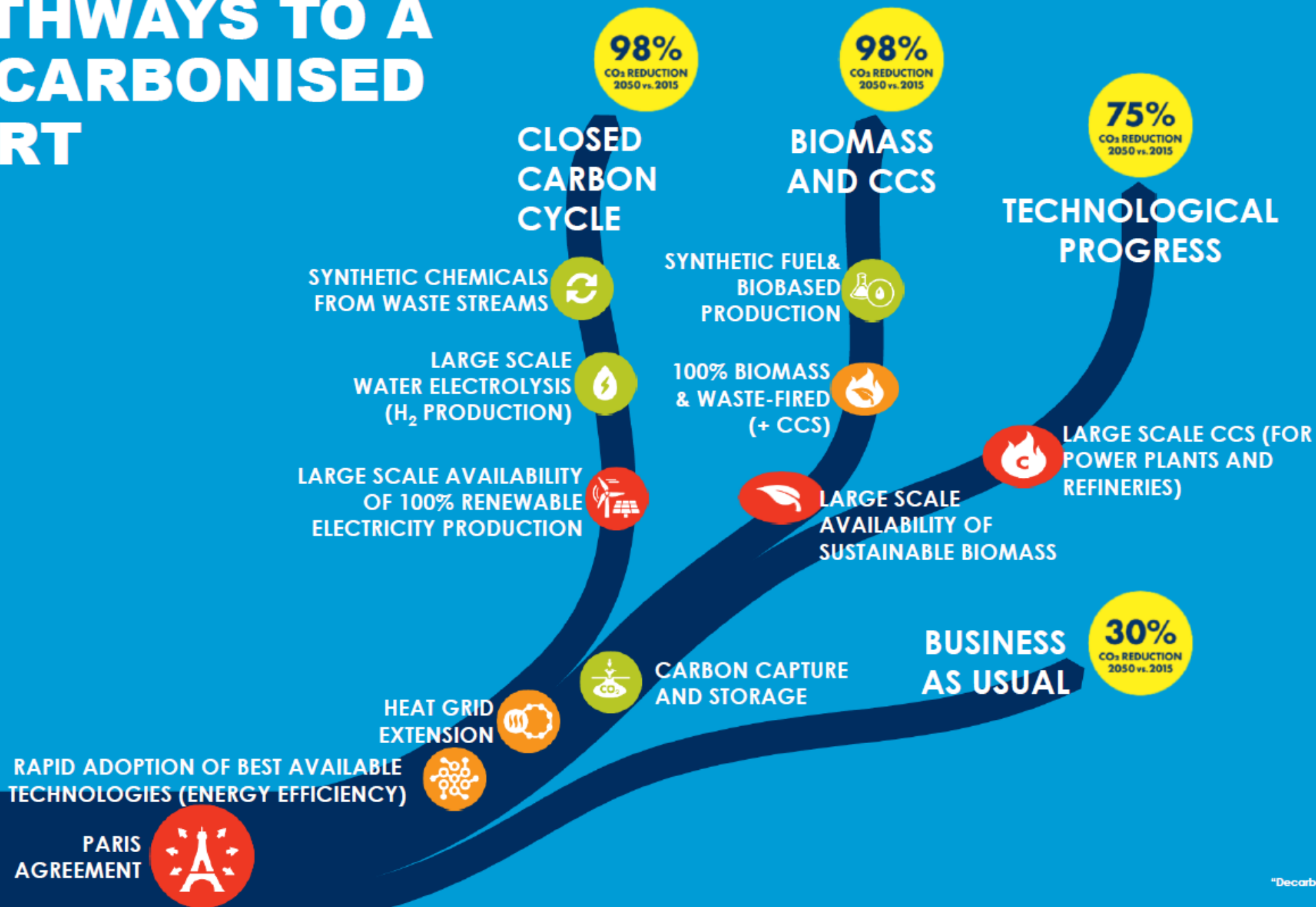


The throughput in Kiel fell to seven million tonnes, says port director Dirk Claus. A large part of it consists of general cargo in ferry transport between Northern Germany and other countries on the Baltic Sea, the Baltic Gulf and

Decarbonisation policies: towards zero emission in 2050

- New energy sources: (offshore) wind, solar, green hydrogen, green LNG, etc.
- New feedstocks: bio-based: algae, seaweed, etc.
- Circular economy
- CO₂-taxing
- Carbon Capture Storage and Usage
- Energy efficiency

PATHWAYS TO A DECARBONISED PORT





Flettner rotor



Wing sails



DynaRig



Kites

Source:
DNV GL



Stena Line sails more economically thanks to artificial intelligence

Stena Line will equip more ships with artificial intelligence (AI). A pilot in which the AI technology on board the "Stena Scandinavica" predicted the most efficient route proved to be extremely successful. Fuel consumption was reduced by 2 to 3% during the test, as was recently demonstrated at the KVNR Membership Day in Capelle aan den IJssel where the results of the pilot project were presented.



In 2018, Stena Line equipped its first ship, the "Stena Scandinavica", on the Gothenburg-**Kiel** route, with this system to support the captain and officers. "The AI model simulates a number of scenarios based on various

Digitalisation policies: towards a smart port in 2042

- Artificial Intelligence
- Big data
- Internet-of-things
- Blockchain
- Robotisation
- Autonomous shipping, etc. etc.

- **New skills** needed: but also **de-skilling** of port workers
- Rotterdam: **port-innovation ecosystem**: opportunities Kiel!
- Founded by top universities (University Kiel), vocational institutes (Fachhochschule Kiel), government and business cooperation (high-tech military and civil shipbuilding).



**The
Economist**

Venezuela erupts

How to defend Taiwan

India's internet tycoon bets big

Drones: hovering with intent

JANUARY 26TH–FEBRUARY 1ST 2019

Slowbalisation

The future of global commerce



Deglobalisation: regional instead of global in 2042

- Trade wars: changing the economic geography of manufacturing
- Structural slowing down of global trade since 2010
- Near-sourcing/re-shoring: production close to the market
- 3D-printing, Industry 4.0 (digitalisation)
- Dematerialisation
- An aging population consumes relatively more services
- Circular Economy (stretching of product life)
- Negative public opinion associated with globalisation and containerisation: MSC Zoe, Boxes in the countryside, local products

00:06
3 januari 2019

MSC Zoe lost 342 containers on januari 2, 2019













06

07

08

09

10

11

12

13

14

15

16

17

18

19

20

Member of **HNA** Group

TERMINAL TILBURG BV

K LINE

SLAGHUIS

← DRIVERS
ENTRANCE



GL
CERTIFIED

TAL
INTERNATIONAL

TCLU 4955
4561

MAX. GROSS	32.500 M
	71.650 L
TARE	3.840 M
	8.460 L
NET	28.660 M
	63.190 L
CU. CAP.	76.4 C
	2.700 C

STEEL CONTAINER

OG-91-HG

BARGE TERMINAL TILBURG BV

GVT
GROUP OF LOGISTICS

J IANNIS TRAILER SERVICE
www.jiannis.nl

J IANNIS
010

Disruption/geopolitics



鹿特丹

杜伊斯堡

安特衛普

澤布呂赫

威尼斯

畢爾巴鄂

伊斯坦布尔

雅典

巴塞羅那

瓦倫西亞

港口說

内罗毕

乌鲁木齐

北京

兰州

西安

广州

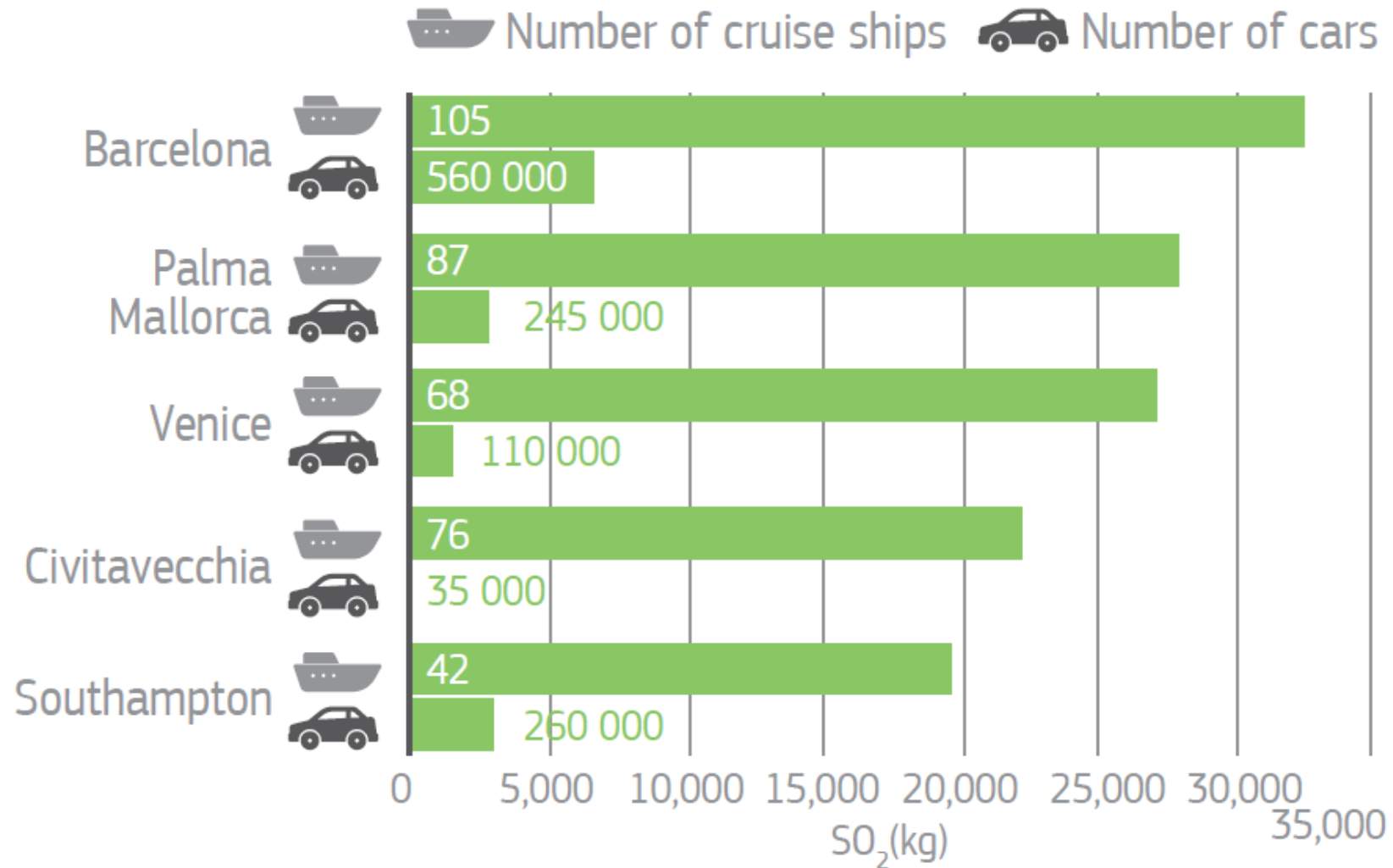
泉州

海口

Decreasing negative externalities: port-city relations

- Clean air, no noise or smell, no port-related congestion
- Attractive environment for working, living and recreation.

Figure 4. Cruise ships docking in Barcelona emit 5 times more sulphur than the city's 560,000 cars every year



Source: [Transport & Environment](#), 2019

Emission of SO_x from cruise ships and LDVs in selected cruise polluted European ports in 2017.

Ranking	Port	Number cruise ships	Port call time (hours)	SO _x from cruise ships (kg)	Number of registred LDVs	SO _x from number of registred LDVs (kg)	Ratio of SO _x from cruise ships and LDVs
1	Barcelona	105	8,293	32,838	558,920	6,812	4,82
32	Rotterdam	18	1,538	7,714	225,210	2,745	2,81
40	Kiel	24	1,661	6,260	109,052	1,226	5,28

Scrubber cleans exhaust gases

Clean fuel systems at Stena Line

Stena Line's cargo ships Transit and Transponder use clean fuel systems. The engines of the ferries that cross three times a week to the British town of Killingholme ran on fuel oil. Thanks to scrubber technology, the exhaust gases contain much less sulfur oxide (a combustion gas from fuel oil).

Stena Line is also looking for alternative fuels and emission techniques for the rest of their fleet. For example, the company is investigating the possibilities of using cleaner LNG (liquefied natural gas). One ship from the fleet, the Stena Germanica that sails between Gothenburg and **Kiel**, is being converted for the methanol fuel (costs: 22 million euros). It will be the first methanol-powered ship in the world. And the ferry ships that moor in Hoek van Holland are ashore.



German ports want more shore power

The German Minister of Economic Affairs Peter Altmaier and representatives of five German Länder have signed a letter of intent in Kiel to promote the use of shore power in the German seaports.

ROB MACKOR  11 oktober 2019 11:38



This should contribute to cleaner air in the port cities and climate protection. The statement contains few concrete objectives and no hard planning. There is, however, a reference to a subsidy program of 140 million euros, which should come



Color Line starts Oslo-Verona rail service via the port of Kiel

The Norwegian Color Line has started a weekly rail service between the northern German port city of Kiel and the northern Italian Verona. The service is in line with the ferry services between Kiel and Oslo.

FOLKERT NICOLAI ✉ 18 oktober 2019 11:45



Regarding the track, the service is provided by Kombiverkehr. Goods must be delivered for ferry transport in Oslo on Friday afternoon and tracked in Kiel, arriving in Verona at six o'clock on the following Tuesday morning.

Decreasing negative externalities: port-city relations

- Clean air, no noise or smell, no port-related congestion
- Attractive environment for working, living and recreation.

- Attractive economic opportunities city of Kiel
- New skills needed for port of the future: digital/soft skills/etc.
- Diversification: use top universities for a leading role in digital and sustainable solutions.

Conclusion: Ports of Tomorrow are:

- Decarbonised and on target towards 2050
- Digitalised: ports are smart and intelligent and use local knowledge infrastructure
- Deglobalised: more related to the larger regional/European economy than to the global economy
- Diversified: high-tech innovation, smart manufacturing
- Attractive placed to work, live and recreate!

Kiel is working hard to realise these goals towards 2042!